



LOGISTICS[®]
PROPERTY
CO

EAGLE 25 LOGISTICS CENTER

SEC of I-25 & E470



4 BUILDINGS | 750,372 SQUARE FEET | DELIVERING Q2 2027

- Highly flexible site plan with varying building depths from 180' - 240'
- Unrivaled highway visibility with 122,000 VPD on I-25 and 27,000 VPD from E470
- Convenient, quick access to Denver Metro
- State of the art construction with 28' - 32' clear
- Three speculative developments totaling 608,412 SF, divisible to 28,000 SF
- Fourth building available as a build-to-suit up to 117,912 SF with a flexible site plan
- Adjacent land with build-to-suit availability up to 500,000 SF on 60 acres
- Planned Development zoning with Industrial overlay, allowing for most flexible use cases in submarket
- Registered for LEED Certification



Colliers Denver
4643 S. Ulster St., Suite 1000
Denver, CO 80237
303 745 5800
colliers.com/denver

T.J. Smith, SIOR
+1 303 283 4576 • tj.smith@colliers.com
Nick Rice
+1 720 833 4620 • nick.rice@colliers.com



LOGISTICS[®]
PROPERTY
CO

EAGLE 25 LOGISTICS CENTER

SEC of I-25 & E470



Colliers Denver
4643 S. Ulster St., Suite 1000
Denver, CO 80237
303 745 5800
colliers.com/denver

T.J. Smith, SIOR
+1 303 283 4576 • tj.smith@colliers.com
Nick Rice
+1 720 833 4620 • nick.rice@colliers.com



LOGISTICS[®]
PROPERTY
CO

EAGLE 25 LOGISTICS CENTER

SEC of I-25 & E470



**Build-to-suit available
up to 500,000 SF on
60 acres**



BLDG. 1

BLDG. 2

BLDG. 3

BLDG. 4

EAGLE WAY

WASHINGTON ST.

152ND AVE.

GRANT ST.



Colliers Denver
4643 S. Ulster St., Suite 1000
Denver, CO 80237
303 745 5800
colliers.com/denver

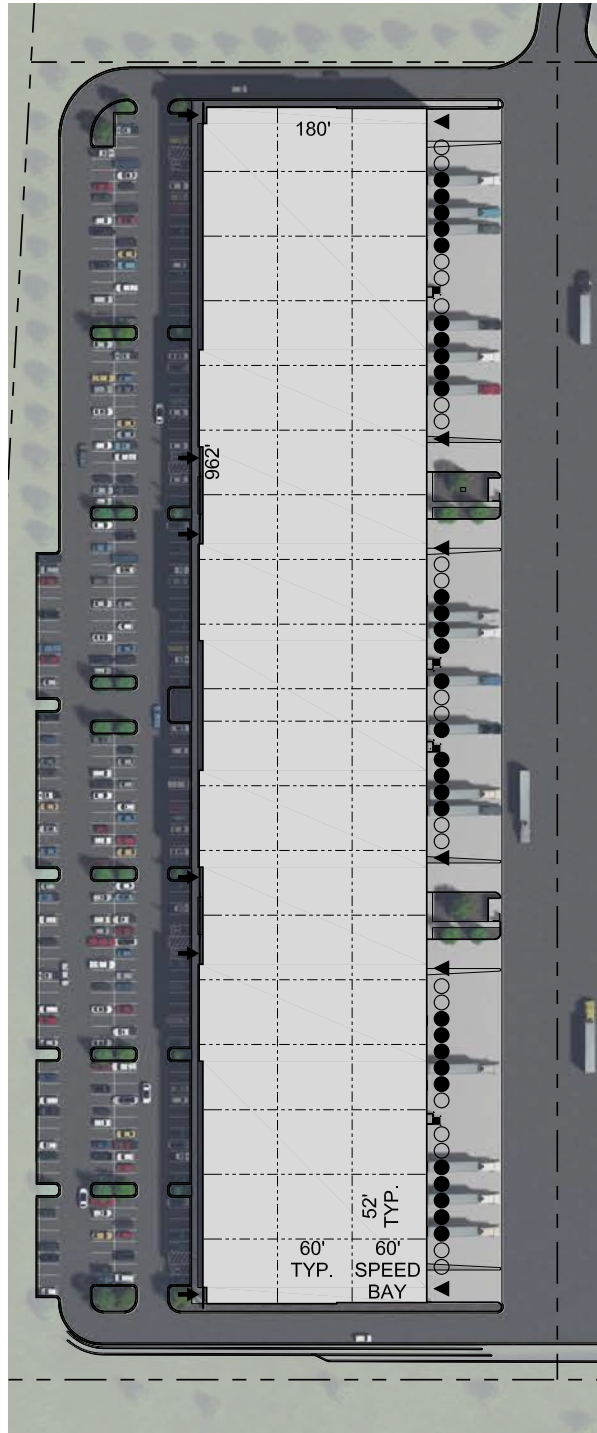
T.J. Smith, SIOR
+1 303 283 4576 • tj.smith@colliers.com
Nick Rice
+1 720 833 4620 • nick.rice@colliers.com



LOGISTICS[®]
PROPERTY
CO

EAGLE 25 LOGISTICS CENTER

SEC of I-25 & E470



Building 1

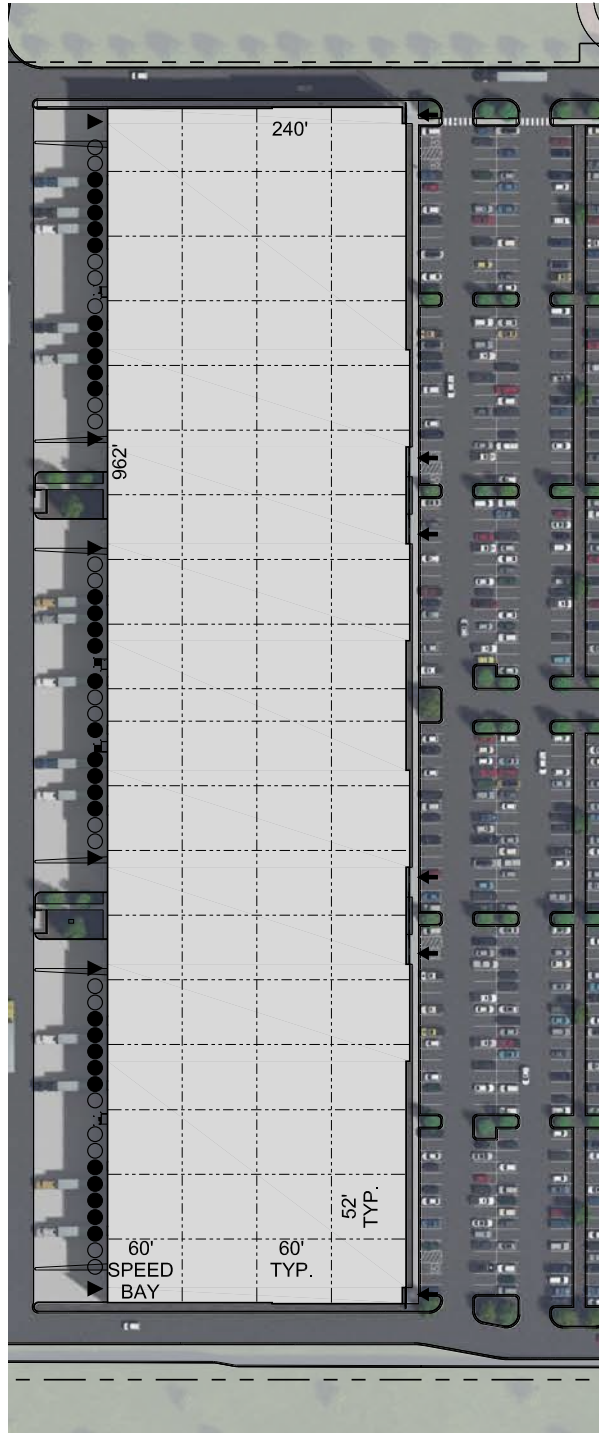
Building size:	174,177 SF
Clear height:	28'
Depth:	180'
Tenant entries:	4
Typical bay size:	60' x 52'
Speed bay size:	60' x 52'
Truck dock positions:	26
Dock pit levelers:	12
Drive in doors:	6
Knock-outs:	18
Car parking:	366
Water service line:	3"
Slab size:	7"
Fire protection:	ESFR
Electrical service:	3,000 Amps 277/480V 3 Phase

- ▲ Drive-In Overhead Door
- Dock Height Overhead Door
- Knock-Out



Colliers Denver
4643 S. Ulster St., Suite 1000
Denver, CO 80237
303 745 5800
colliers.com/denver

T.J. Smith, SIOR
+1 303 283 4576 • tj.smith@colliers.com
Nick Rice
+1 720 833 4620 • nick.rice@colliers.com



Building 2

Building size:	231,738 SF
Clear height:	32'
Depth:	240'
Tenant entries:	4
Typical bay size:	60' x 52'
Speed bay size:	60' x 52'
Truck dock positions:	26
Dock pit levelers:	30
Drive in doors:	6
Knock-outs:	18
Car parking:	384
Water service line:	3"
Slab size:	7"
Fire protection:	ESFR
Electrical service:	2 x 3,000 Amps 277/480V 3 Phase

- ▲ Drive-In Overhead Door
- Dock Height Overhead Door
- Knock-Out



Colliers Denver
4643 S. Ulster St., Suite 1000
Denver, CO 80237
303 745 5800
colliers.com/denver

T.J. Smith, SIOR
+1 303 283 4576 • tj.smith@colliers.com
Nick Rice
+1 720 833 4620 • nick.rice@colliers.com



LOGISTICS[®]
PROPERTY
CO

EAGLE 25 LOGISTICS CENTER

SEC of I-25 & E470



Building 3

Building size:	202,497 SF
Clear height:	32'
Depth:	210'
Tenant entries:	4
Typical bay size:	50' x 52'
Speed bay size:	60' x 52'
Truck dock positions:	26
Dock pit levelers:	12
Drive in doors:	6
Knock-outs:	18
Car parking:	335
Water service line:	3"
Slab size:	7"
Fire protection:	ESFR
Electrical service:	3,000 Amps 277/480V 3 Phase

- ▲ Drive-In Overhead Door
- Dock Height Overhead Door
- Knock-Out



Colliers Denver
4643 S. Ulster St., Suite 1000
Denver, CO 80237
303 745 5800
colliers.com/denver

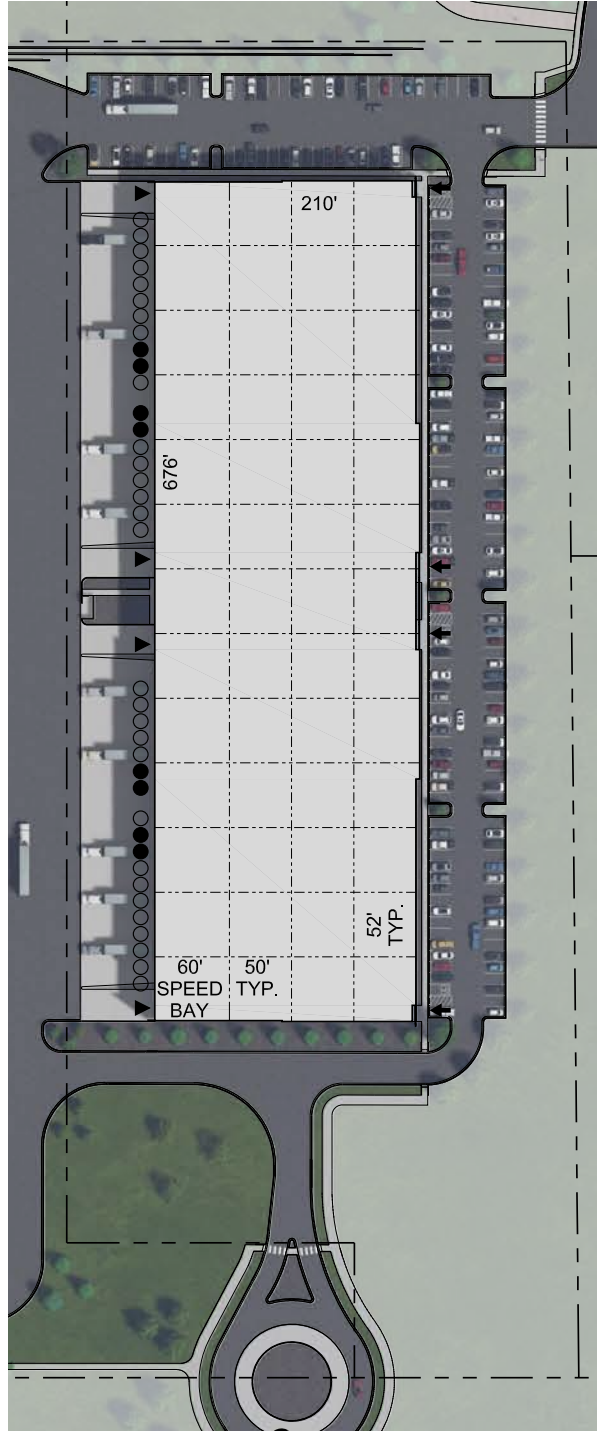
T.J. Smith, SIOR
+1 303 283 4576 • tj.smith@colliers.com
Nick Rice
+1 720 833 4620 • nick.rice@colliers.com



LOGISTICS[®]
PROPERTY
CO

EAGLE 25 LOGISTICS CENTER

SEC of I-25 & E470



Building 4 - Build-to-Suit

Building size:	Up to 141,960 SF
Clear height:	28'
Depth:	210'
Tenant entries:	4
Typical bay size:	50' x 52'
Speed bay size:	60' x 52'
Truck dock positions:	15
Dock pit levelers:	8
Drive in doors:	4
Knock-outs:	15
Car parking:	234
Water service line:	3"
Slab size:	7"
Fire protection:	ESFR
Electrical service:	3,000 Amps 277/480V 3 Phase

- ▲ Drive-In Overhead Door
- Dock Height Overhead Door
- Knock-Out



Colliers Denver
4643 S. Ulster St., Suite 1000
Denver, CO 80237
303 745 5800
colliers.com/denver

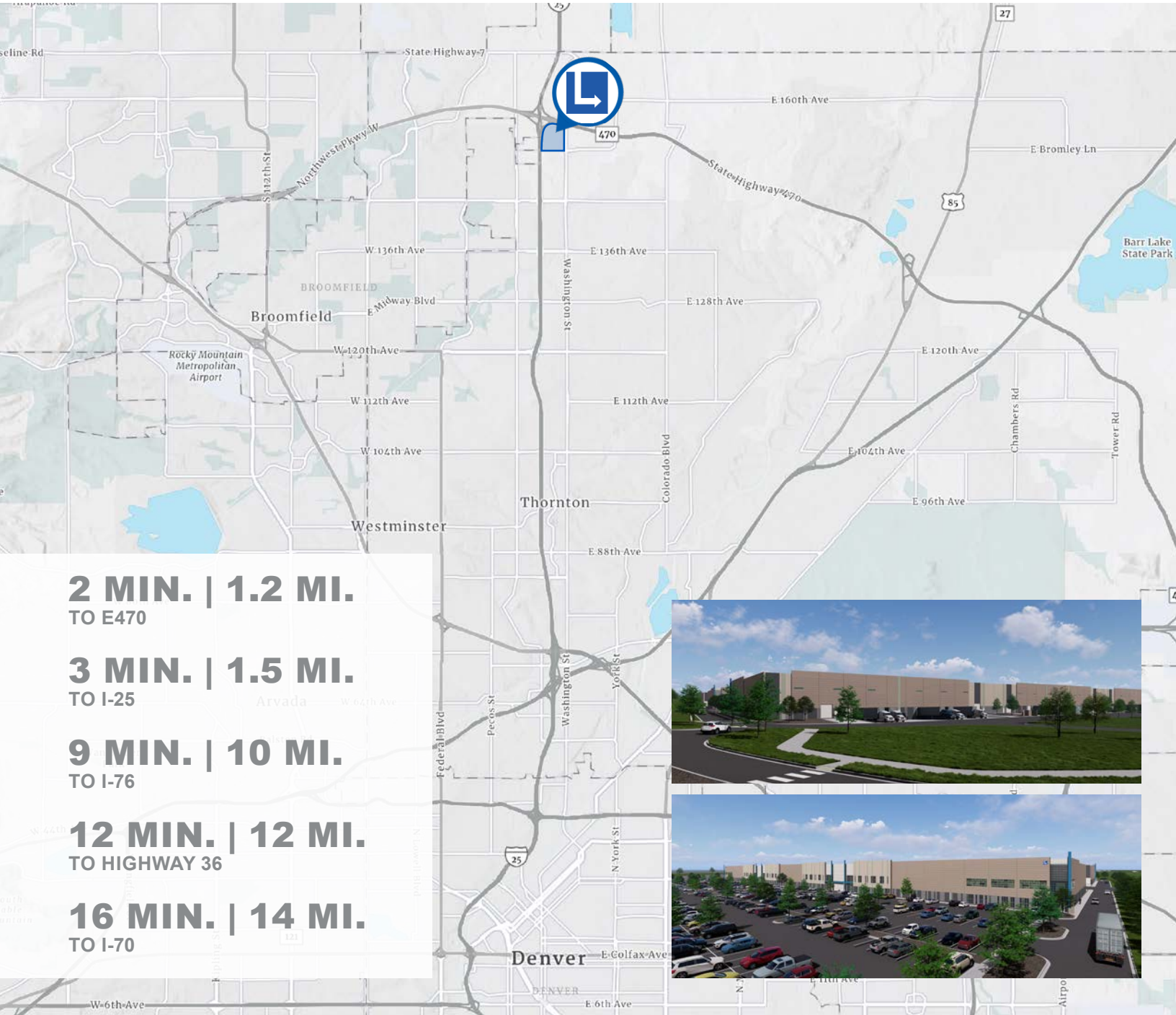
T.J. Smith, SIOR
+1 303 283 4576 • tj.smith@colliers.com
Nick Rice
+1 720 833 4620 • nick.rice@colliers.com



LOGISTICS
PROPERTY
CO

EAGLE 25 LOGISTICS CENTER

SEC of I-25 & E470



2 MIN. | 1.2 MI.
TO E470

3 MIN. | 1.5 MI.
TO I-25

9 MIN. | 10 MI.
TO I-76

12 MIN. | 12 MI.
TO HIGHWAY 36

16 MIN. | 14 MI.
TO I-70



Colliers Denver

4643 S. Ulster St., Suite 1000
Denver, CO 80237

303 745 5800
colliers.com/denver

T.J. Smith, SIOR

+1 303 283 4576 • tj.smith@colliers.com

Nick Rice

+1 720 833 4620 • nick.rice@colliers.com